



# INSTALLATION INSTRUCTIONS

## KWI FLOAT MOD FOR ALL YEARS CAN AM X3

**PART NUMBER(s): FLOATMOD**

**IF YOU HAVE A AFTERMARKET BILLET TRANSMISSION SEAL GUARD YOU MUST REMOVE IT BEFORE YOU INSTALL THE KWI FLOAT MOD SECONDARY OR BELT FAILURES WILL OCCUR.**

### TOOLS NEEDED

- 1/2" Drive Impact Gun
- 22mm or 7/8" - Wrench
- 19mm or 9/16" - 1/2" drive impact socket
- 17mm - 1/2" Drive Impact Socket
- Torque Wrench
- T30 Torx
- long 1/4" or 3/8" extension
- Moly grease
- Clutch Belt removal tool
- Cell phone with camera
- Vorhees vise or equivalent holding tool



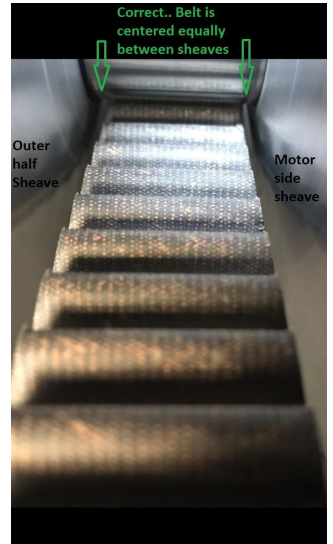
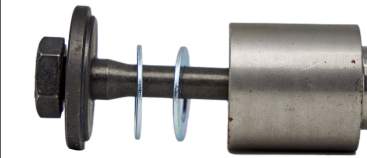
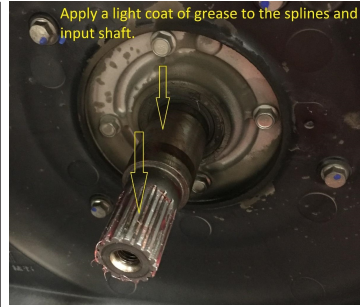
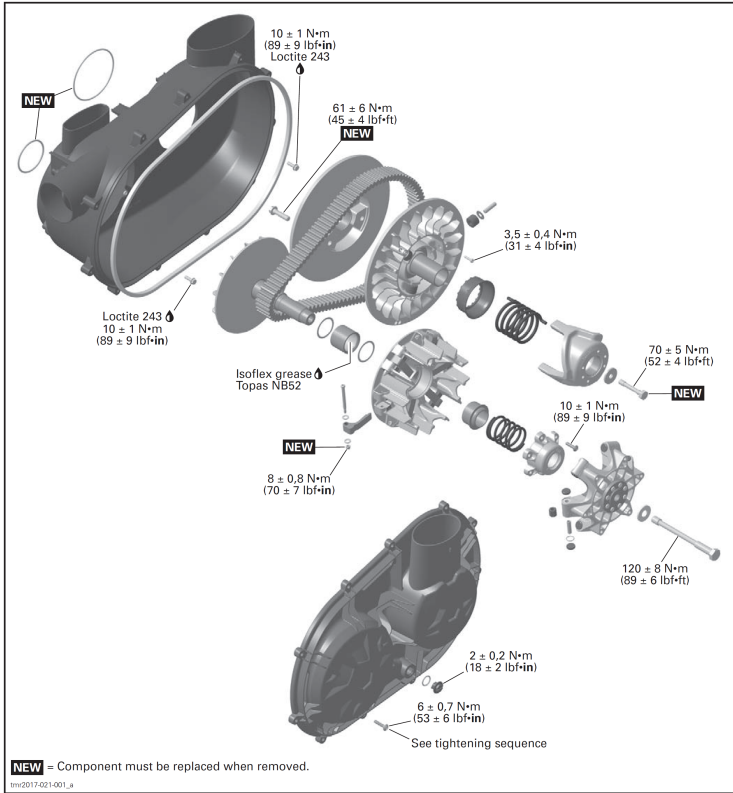
NOTE: No component marking is required before disassembly. The clutches feature factory apposed index marks as references if needed.

### Removing and installing KWI Float Mod primary clutch (PDrive and QRSX)

- 1) Remove belt box cover. (T30 Torx)
- 2) Remove CVT belt. (Clutch Belt removal tool)
- 3) Remove primary clutch bolt. (22mm - 1/2" Drive Impact Socket)
- 4) Thread clutch puller into primary clutch and tighten until clutch pops off crankshaft. (14mm or 9/16" -1/2" Drive Impact Socket)(1/2" Drive Impact Gun)
- 5) Clean crankshaft and clutch taper with acetone or brake cleaner.
- 6) Secure primary clutch on crankshaft by torquing the primary clutch bolt to bolt manufacturer specs. (22mm or 7/8" -1/2" Drive Socket)(Torque Wrench)Use KWI Vorhees Vise or equivalent to hold primary while torquing primary bolt (BRP OEM bolt 89+/-6 ft/lb)(KWI 630 bolt 115+/-6 ft/lb)

### Removing and installing KWI Float Mod secondary clutch (QRSX and PDrive)

- 1) Remove belt box cover. (T30 Torx)
- 2) Remove CVT belt. (Clutch Belt removal tool)
- 3) Remove secondary clutch bolt. (17mm or 7/8" - 1/2" Drive Socket)
- 4) Secondary clutch will slide off shaft. (Retain bolt and washer for re-use)
- 5) Clean and lubricate gearbox secondary shaft splines with moly grease.  
**\*\*\*EVERY 500 MILES REMOVE SECONDARY CLUTCH- CLEAN AND RE-LUBRICATE SECONDARY SHAFT SPLINES WITH MOLY GREASE\*\*\*FAILURE TO COMPLY WILL CAUSE HARD SHIFTING\*\***
- 6) Install KWI Float Mod Wave Spring on shaft.
- 7) Align splines and slide secondary clutch on shaft. (Do not force or bang splines against shaft or you can create a burr that makes install difficult)(Place car in drive then wiggle and turn secondary until splines align and clutch slides on)
- 8) Install factory step washer, 1 thick KWI Float Shim, 1 thin KWI Float Shim and KWI Float Billet Spacer on secondary clutch bolt.
- 9) Lightly tighten secondary clutch bolt
- 10) Spin secondary clutch 10 turns CCW by hand while pulling lightly outward on helix.
- 11) Verify belt is centered between the primary sheaves. (use a cell phone held between clutches and take a photo looking forward at primary bearing)
- 12) Adjust KWI Float Mod shimming as required to center belt. Increase the thickness of the total KWI Float Shims to move belt away from motor and decrease the thickness of the total KWI Float Shims to move belt toward motor.
- 13) Secure secondary clutch on crankshaft by torquing the secondary clutch bolt to bolt manufacturer specs.(17mm -1/2" Drive Socket)(Torque Wrench) Use Vorhees vise or equivalent holding tool to hold secondary while torquing.
- 14) Reinstall CVT belt and belt box cover.



## PARTS INCLUDED

	PART DESCRIPTION	QTY	OEM PART #	OUR PART #
	FLOAT WAVE SPRING	1	—	—
	FLOAT BILLET SPACER	1	—	—
	FLOAT SHIM- THIN	2	—	—
	FLOAT SHIM- THICK	1	—	—
			—	—
			—	—
			—	—

### LIABILITY STATEMENT

As defined by the Magnuson-Moss warranty Act. Do not install any performance parts or services unless you have the technical ability to properly set-up the entire machine to compensate for the installation of those parts. The necessary work and expertise needed to install different product varies. Instructions, where provided, are given to assist in installation only; they are not a substitute for mechanical experience in setting up racing vehicles. References to performance gains, reliability, ease of installation, etc. are based on our and outside customer's experiences. This is not a guarantee of similar performance in every installation. While we sell proven products, in the end it's up to the individual to make the most of the product. Kris Werth Inc. d.b.a. KWI Clutching or its associated corporations are not responsible for any personal or property damages caused by this product. Kris Werth Inc. d.b.a. KWI Clutching or its associated corporations assumes no responsibility for damage or injury of any kind because of misuse, improper installation or improper application of any parts in anyway, by any person. Contact your local dealer to schedule installation of this kit if you are not a qualified ATV or UTV mechanic. USE OF PRODUCTS. BUYER SHALL USE, AND REQUIRE ITS EMPLOYEES, CONTRACTORS, AND AGENTS TO USE, ALL AVAILABLE SAFETY PRECAUTIONS, IN ADDITION TO ANY SPECIFICALLY SET FORTH IN ANY MANUALS, MATERIAL SAFETY DATA SHEETS, TECHNICAL DATA SHEETS, INSTRUCTION SHEETS, IF ANY, FURNISHED BY SELLER (OR AVAILABLE FROM RAW MATERIAL SUPPLIERS) RELATING TO SELLER'S PRODUCTS. IF BUYER DOES NOT RECEIVE ANY REQUIRED MATERIAL SAFETY DATA SHEETS FOR ANY PRODUCT FROM SELLER, BUYER WILL REQUEST THEM FROM SELLER. IF BUYER FAILS TO STRICTLY OBSERVE EACH AND EVERY ONE OF THE OBLIGATIONS SET FORTH IN THIS SECTION 22 OR IF BUYER'S USE OF ANY OF SELLER'S PRODUCTS IS IN VIOLATION OF ANY STANDARD OR RULE OF THE AMERICAN NATIONAL STANDARDS INSTITUTE OR OCCUPATIONAL HEALTH AND SAFETY ACT, OR OTHER APPLICABLE WORKPLACE LAW, REGULATION, OR STANDARD, BUYER WILL INDEMNIFY, DEFEND, AND HOLD HARMLESS SELLER AND SELLER AND ITS EMPLOYEES, OFFICERS, DIRECTORS, AGENTS, AFFILIATES, SUCCESSORS AND ASSIGNS FROM AND AGAINST ANY AND ALL CLAIMS, DEMANDS, DAMAGES, ACTIONS, AND CAUSES OF ACTION, AS WELL AS ANY AND ALL LIABILITY, LOSS, OR EXPENSE OF ANY KIND, INCLUDING REASONABLE ATTORNEYS' FEES ARISING FROM, CONNECTED WITH OR IN ANY WAY PERTAINING TO ANY SUCH FAILURE BY BUYER.

NOTIFICATION. BUYER SHALL NOTIFY SELLER PROMPTLY, AND IN ANY EVENT WITHIN 30 DAYS, AFTER ANY ACCIDENT OR FAILURE INVOLVING SELLER'S PRODUCTS THAT RESULTS IN PERSONAL INJURY OR DAMAGE TO PROPERTY AND SHALL COOPERATE FULLY WITH SELLER IN INVESTIGATING AND DETERMINING CAUSES OF SUCH ACCIDENT OR FAILURE. ATTORNEYS' FEES AND COSTS. BUYER WILL PAY SELLER'S REASONABLE ATTORNEYS' FEES AND OTHER COSTS AND EXPENSES FOR ANY LEGAL OR EQUITABLE ACTION UNDERTAKEN BY SELLER TO ENFORCE THESE TERMS OR THE PROVISIONS OF ANY SUPPLY AGREEMENT.