

### PART NUMBER(s): PDPRIREBKIT

**WE ARE NOT RESPONSIBLE FOR ANY DAMAGES.  
BE VERY CAREFUL TO NOT DAMAGE YOUR CLUTCH  
DURING THIS PROCESS.**

### TOOLS NEEDED

- 1/2" Drive Impact Gun
- 22mm or 7/8" - Wrench
- 17mm - 1/2" Drive Socket
- 13mm- 1/2" Drive Socket
- Torque Wrench
- 6mm Allen Wrench
- T30 Torx
- T40 Torx
- KWI MAVTOOL V2 clutch tool set or equivalent
- Clutch Belt removal tool
- Blue Locktite
- Vorhees Vise clutch holding tool or equivalent



### ESTIMATED INSTALL TIME

60 MINUTES

### Removing and installing primary clutch (PDrive and QRSX)

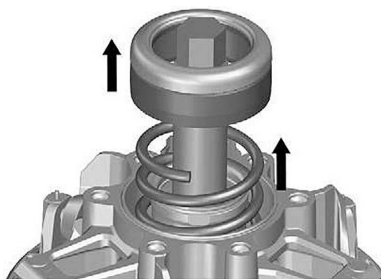
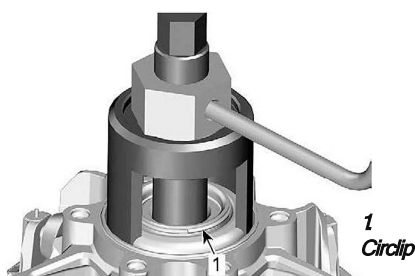
- 1) Remove belt box cover. (T30 Torx)
- 2) Remove CVT belt. (Clutch Belt removal tool)
- 3) Remove primary clutch bolt. (22mm - 1/2" Drive Impact Socket)
- 4) Thread clutch puller into primary clutch and tighten until clutch pops off crankshaft. (14mm or 9/16" - 1/2" Drive Impact Socket)(1/2" Drive Impact Gun)
- 5) Clean crankshaft and clutch taper with acetone or brake cleaner.
- 6) Secure primary clutch on crankshaft by torquing the primary clutch bolt to bolt manufacturer specs.(22mm or 7/8" - 1/2" Drive Socket)(Torque Wrench)
- 7) Reinstall CVT belt and belt box cover.

### Primary clutch disassembly and reassembly (PDrive)

- 1) Remove primary clutch. (See "Removing and installing primary clutch")
- 2) Thread clutch puller all the way in by hand and then back out 4 turns.
- 3) Remove 6 each Torx screws holding governor cup cap to governor cup.(T40 Torx)
- 4) Put Moly grease on the top of the primary puller and on the threads of puller cup bolt.
- 5) Insert puller cup into puller plate and secure to governor cup cap using 6 each M8 bolts.(6mm Allen Wrench)
- 6) Tighten puller cup bolt until governor cup plate pops off its taper. (STOP TIGHTENING AS SOON AS IT POPS)(1/2" Drive Impact Gun)(24mm or 15/16" - 1/2" Drive Impact Socket)
- 7) Remove puller cup, puller plate clutch puller and governor cup plate.

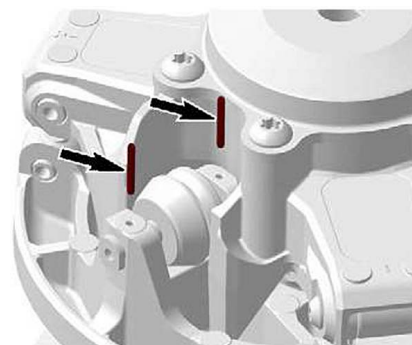
## Primary clutch disassembly and reassembly (PDrive) - CONTINUED-

- 8) Place circlip remover/installer on top of spring retainer, install threaded rod through circlip installer/remover and screw into clutch approx 10 turns. Turn nut in to compress spring and take tension off of circlip. Remove circlip. Turn nut out to relax spring tension. Remove threaded rod, circlip installer/remover and disassemble clutch as required. (22mm or 7/8" - Wrench)
- 9) Reassemble in reverse order. Use threaded rod and tool disc to hold primary while torquing. All tapers will lock upon clutch installation to crankshaft.



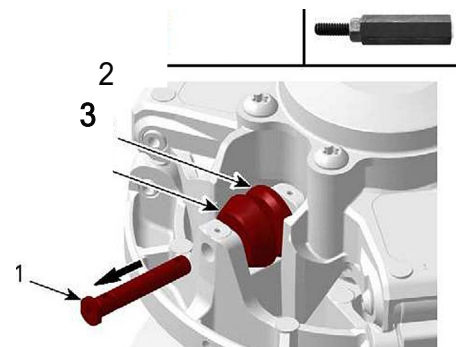
## Install cone roller replacement kit

- 1) Carefully pull out dowels by using a pliers, dis-card them.

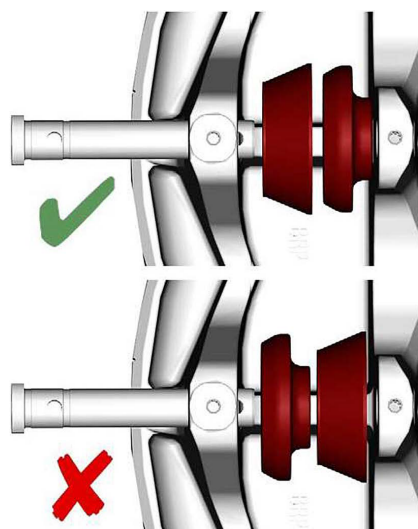


- 2) Screw in the KWI "Hammer" puller tool and remove bearing sleeve, then remove inner and outer rollers.

- 1 Bearing sleeve
- 2 Inner roller
- 3 Outer roller

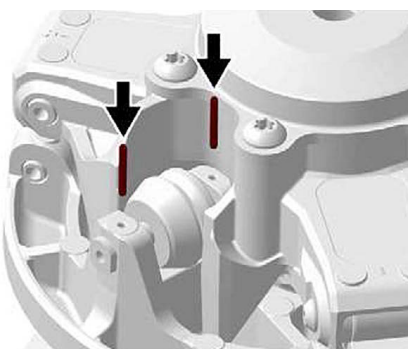


- 3) Position the flat sides of the bearing sleeve head vertically.
- 4) Push a new bearing sleeve back in place thru the inner and outer roller. Tap with a hammer and use a small wrench to turn the bearing sleeve to line up dowel holes
- 5) Tap in new dowels



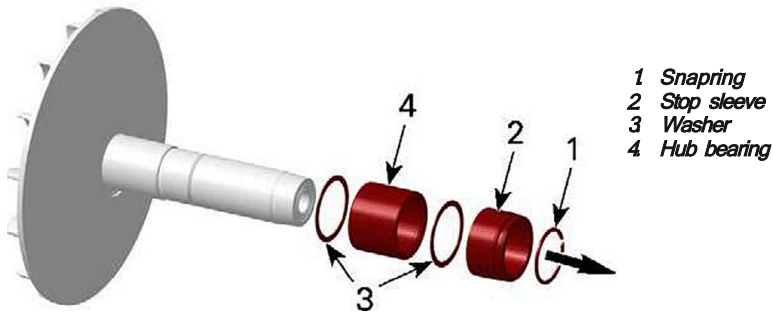
## NOTICE

The dowels must have a tight press fit in their bores in the sliding sheave, loosen dowels due to worn bores may cause severe CVT damage. Always replace dowels by new ones.



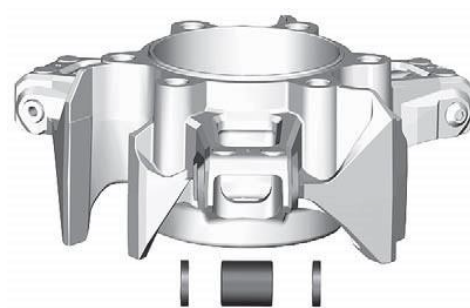
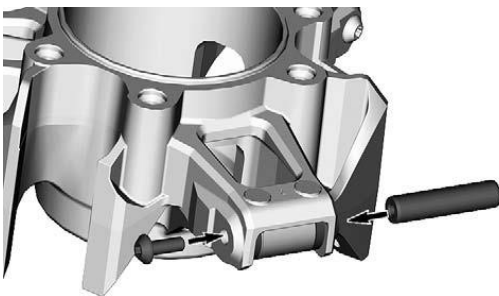
## Replace bearing thrust washers and lubricate bearing

- 1) Remove snap ring.
- 2) Slide off stop sleeve, hub bearing and 2 thrust washers
- 3) Thoroughly clean clutch shaft, stop sleeve and bearing with brake cleaner.
- 4) Apply a LIGHT coat of grease to the center of the bearing rollers only- DO NOT PACK WITH GREASE! Make sure all thrust washers and the sides and top of bearing are COMPLETELY GREASE FREE prior to installation.
- 5) Reassemble components onto clutch shaft using new thrust washers and secure with snap ring.



## Install governor cup roller replacement kit

- 1) Remove torx screw securing the roller pin from each of the 3 rollers.
- 2) Screw the KWI "hammer" into the opposite side of the governor cup roller pin and remove the roller pins.
- 3) Remove the rollers and 2 thrust washers for each roller (the rollers and pins will not be re-used).
- 4) Install new rollers and thrust washers using new pins and torx screws provided. Torque per the torque chart on page 5.

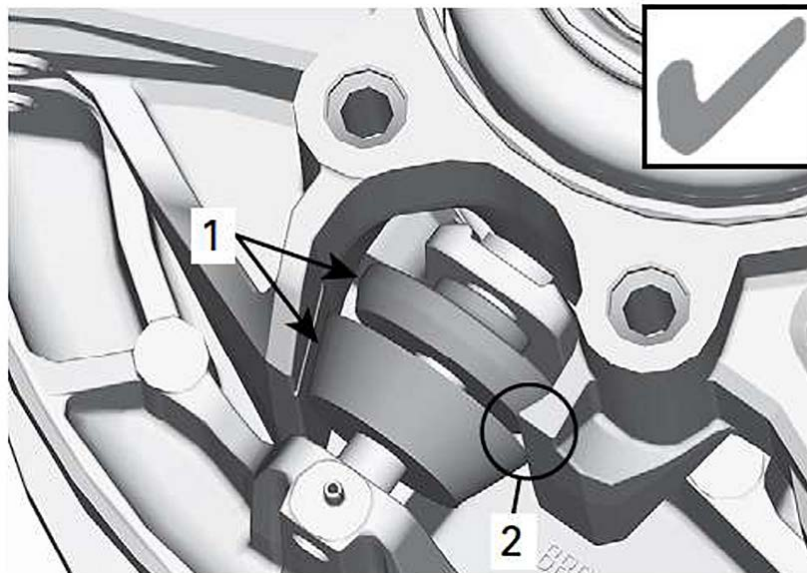


### Reassemble primary clutch

- 1) Remove snap ring.
- 2) Slide off stop sleeve, hub bearing and 2 thrust washers
- 3) Thoroughly clean clutch shaft, stop sleeve and bearing with brake cleaner.
- 4) Apply a LIGHT coat of grease to the bearing rollers only- DO NOT PACK WITH GREASE!  
Make sure all thrust washers, sides and top of bearing are COMPLETELY GREASE FREE prior to installation.
- 5) Reassemble components onto clutch shaft using new thrust washers and secure with snap ring.

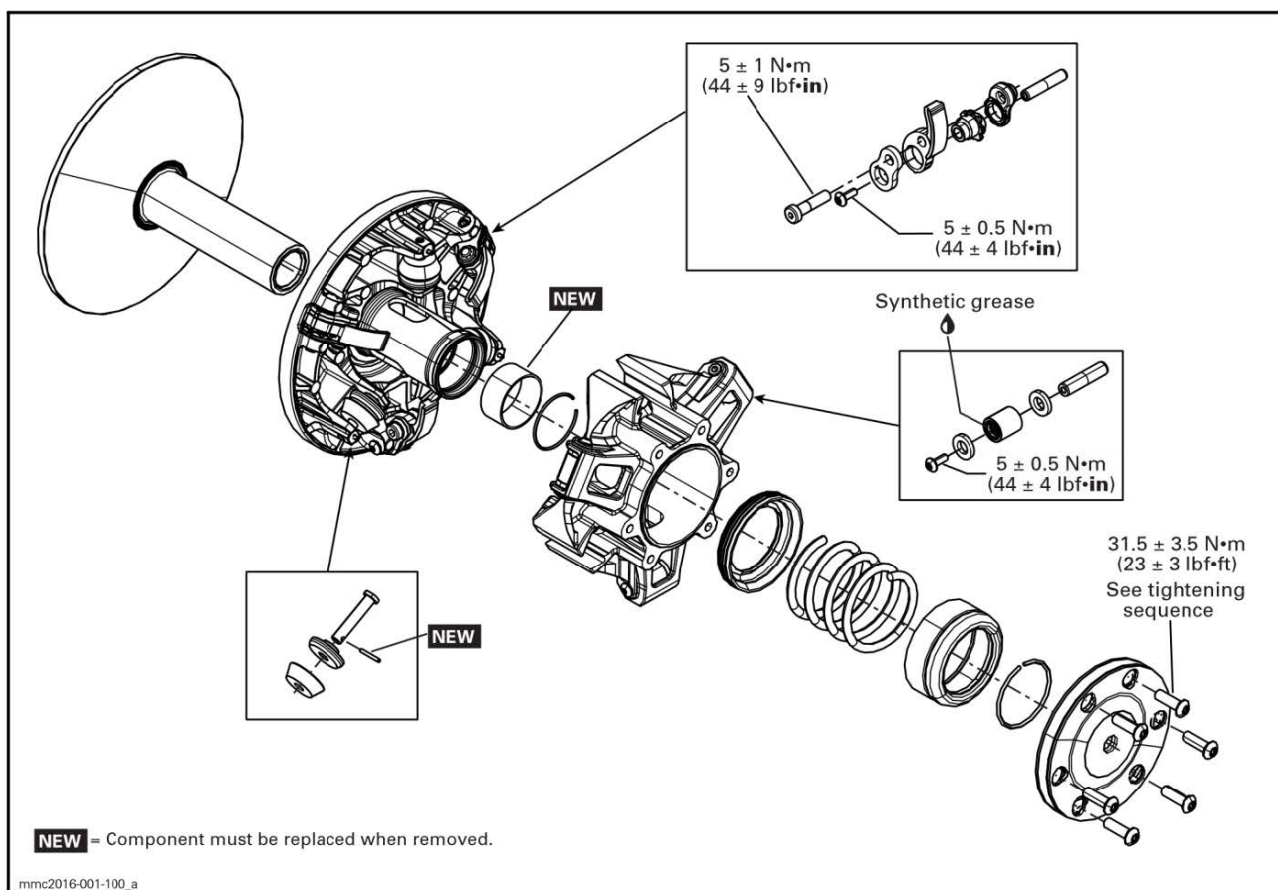
### NOTICE

During installation of the governor cup, make sure to correctly position all inner and outer thrust rollers. Ensure the inner thrust rollers are positioned inside the sliding tracks of the governor cup.



**THRUST ROLLER - GOOD INSTALLATION**

- 1** Thrust rollers  
**2** Inner thrust roller inside sliding track



### KWI PDRIVE PRIMARY CLUTCH REBUILD KIT PARTS INCLUDED

	PART DESCRIPTION	QTY	OEM PART #	OUR PART #
	CONE ROLLER SET	3	—	—
	ROLL PIN	6	—	—
	BEARING THRUST WASHER	2	—	—
	TOPAZ ISOFLEX GREASE	1	—	—
	GOVERNOR CUP ROLLER SET	3	—	—
			—	—
			—	—

#### LIABILITY STATEMENT

As defined by the Magnuson-Moss warranty Act. Do not install any performance parts or services unless you have the technical ability to properly set-up the entire machine to compensate for the installation of those parts. The necessary work and expertise needed to install different product varies. Instructions, where provided, are given to assist in installation only; they are not a substitute for mechanical experience in setting up racing vehicles. References to performance gains, reliability, ease of installation, etc. are based on our and outside customer's experiences. This is not a guarantee of similar performance in every installation. While we sell proven products, in the end it's up to the individual to make the most of the product. Kris Werth Inc. d.b.a. KWI Clutching or its associated corporations are not responsible for any personal or property damages caused by this product. Kris Werth Inc. d.b.a. KWI Clutching or its associated corporations assumes no responsibility for damage or injury of any kind because of misuse, improper installation or improper application of any parts in anyway, by any person. Contact your local dealer to schedule installation of this kit if you are not a qualified ATV or UTV mechanic. USE OF PRODUCTS. BUYER SHALL USE, AND REQUIRE ITS EMPLOYEES, CONTRACTORS, AND AGENTS TO USE, ALL AVAILABLE SAFETY PRECAUTIONS, IN ADDITION TO ANY SPECIFICALLY SET FORTH IN ANY MANUALS, MATERIAL SAFETY DATA SHEETS, TECHNICAL DATA SHEETS, INSTRUCTION SHEETS, IF ANY, FURNISHED BY SELLER (OR AVAILABLE FROM RAW MATERIAL SUPPLIERS) RELATING TO SELLER'S PRODUCTS. IF BUYER DOES NOT RECEIVE ANY REQUIRED MATERIAL SAFETY DATA SHEETS FOR ANY PRODUCT FROM SELLER, BUYER WILL REQUEST THEM FROM SELLER. IF BUYER FAILS TO STRICTLY OBSERVE EACH AND EVERY ONE OF THE OBLIGATIONS SET FORTH IN THIS SECTION 22 OR IF BUYER'S USE OF ANY OF SELLER'S PRODUCTS IS IN VIOLATION OF ANY STANDARD OR RULE OF THE AMERICAN NATIONAL STANDARDS INSTITUTE OR OCCUPATIONAL HEALTH AND SAFETY ACT, OR OTHER APPLICABLE WORKPLACE LAW, REGULATION, OR STANDARD, BUYER WILL INDEMNIFY, DEFEND, AND HOLD HARMLESS SELLER AND SELLER AND ITS EMPLOYEES, OFFICERS, DIRECTORS, AGENTS, AFFILIATES, SUCCESSORS AND ASSIGNS FROM AND AGAINST ANY AND ALL CLAIMS, DEMANDS, DAMAGES, ACTIONS, AND CAUSES OF ACTION, AS WELL AS ANY AND ALL LIABILITY, LOSS, OR EXPENSE OF ANY KIND, INCLUDING REASONABLE ATTORNEYS' FEES ARISING FROM, CONNECTED WITH OR IN ANY WAY PERTAINING TO ANY SUCH FAILURE BY BUYER.

NOTIFICATION. BUYER SHALL NOTIFY SELLER PROMPTLY, AND IN ANY EVENT WITHIN 30 DAYS, AFTER ANY ACCIDENT OR FAILURE INVOLVING SELLER'S PRODUCTS THAT RESULTS IN PERSONAL INJURY OR DAMAGE TO PROPERTY AND SHALL COOPERATE FULLY WITH SELLER IN INVESTIGATING AND DETERMINING CAUSES OF SUCH ACCIDENT OR FAILURE. ATTORNEYS' FEES AND COSTS. BUYER WILL PAY SELLER'S REASONABLE ATTORNEYS' FEES AND OTHER COSTS AND EXPENSES FOR ANY LEGAL OR EQUITABLE ACTION UNDERTAKEN BY SELLER TO ENFORCE THESE TERMS OR THE PROVISIONS OF ANY SUPPLY AGREEMENT.